

KORO-SOUND™ ACOUSTICAL BARRIER

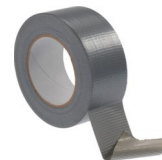
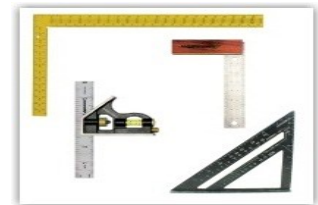
INSTALLATION INSTRUCTIONS



This guide will focus on wall construction assemblies using Koro-Sound™. Follow these easy installation instructions prior to drywall installation and hear the difference.

It is highly recommended that installed drywall is mounted in the opposite direction of the Koro-Sound™ acoustical barrier to avoid seam alignment.

The focus of this installation guide is based on material attached horizontally .



Let's get started...

Follow these steps:

- Position material flat against wall studs and temporarily secure a couple of fasteners at top edge of the first row of to wall stud.
- Once satisfied with material position, secure material - top edge down with pneumatic staple gun with a fastener installed every 8" vertically down each wall stud.
- Mark material with chalk, crayon, or pencil for required cutouts for electrical outlets, ventilation registers, windows, and doorways.
- Cutout marked areas with utility knife.
- Position the next row of material so that bottom edge is square and flush to top edge of first row of material.
- Repeat the steps listed above for each subsequent row of material.
- Apply tape to all seams and apply acoustical sealant to fill gaps.



Points of interest and hints:

- **Caution:** make sure the material is positioned square to the floor before proceeding. Verify and double check with a level, T-square, or tape measure that material itself is level to the floor.
- Make necessary adjustments before permanently securing fasteners. This is a crucial step to avoid overlapping material .
- **Hint:** the goal is to fill all gaps with acoustical sealant - at corners, wall intersections, and top and bottom edges.



Now the wall is ready for drywall installation!